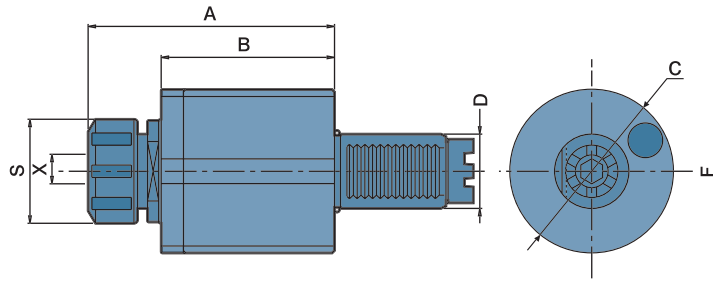
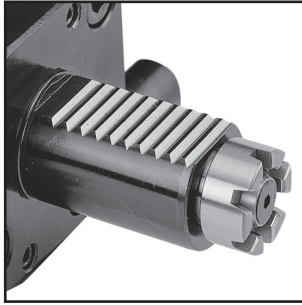




# Axial Drilling And Milling Heads- For "Baruffaldi" Type



SPUR COUPLING-MT TYPE



- Power Transmission According To "BARUFFALDI"
- MT: Frontal Transmission Coupling Gear is Fixed Version

- To be used for collet DIN 6499
- External coolant supply
- Collet is not included

## DIMENSIONS

ORDER NO.	D DIN 69880	X Capacity	S	Maximum R.P.M.	i	A	B	C	CODE NO.
DA20MT16	20	1-10 ER16	30	6000	1 : 1	76	48	58	5006-103
DA30MT25	30	1-16 ER25	42	6000	1 : 1	86	55	68	5006-104
DA40MT32	40	2-20 ER32	50	6000	1 : 1	112	55	86	5006-105
DA50MT40	50	3-26 ER40	63	6000	1 : 1	118	81.5	96	5006-106

## Axial Tapping Heads

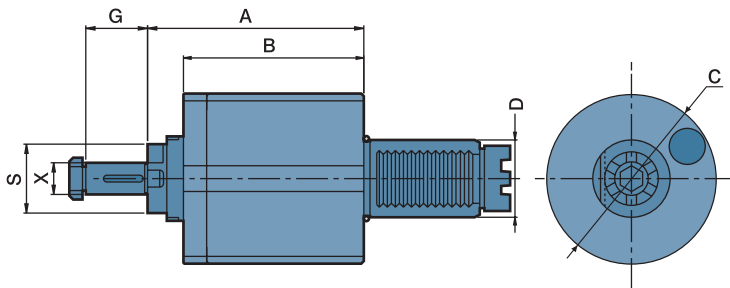
### DIMENSIONS

ORDER NO.	D DIN 69880	X Capacity	S	Maximum R.P.M.	i	A	B	C	CODE NO.
TDA30MT16	30	1-10 ER16	30	3000	1 : 1	108	71.5	68	5006-107
TDA40MT20	40	1-13 ER20	35	3000	1 : 1	95.5	55	86	5006-108
TDA50MT25	50	1-16 ER25	42	3000	1 : 1	123	81.5	96	5006-109



## Axial Milling Heads

SPUR COUPLING-MT TYPE



- External coolant and intermediate rings supply
- To be used for cutter arbor according to DIN 6358

### DIMENSIONS

ORDER NO.	D DIN 69880	X Capacity	S	Maximum R.P.M.	i	A	B	C	G	CODE NO.
DA30MT16C	30	16	32	3000	1 : 1	91.5	55	68	27	5006-110
DA40MT16C	40	16	32	3000	1 : 1	68.5	55	86	27	5006-111
DA40MT22C	40	22	32	3000	1 : 1	68.5	55	86	31	5006-112
DA50MT22C	50	22	40	3000	1 : 1	117	81.5	96	31	5006-113
DA50MT27C	50	27	40	3000	1 : 1	117	81.5	96	33	5006-114