



Sidelock End Mill Holder

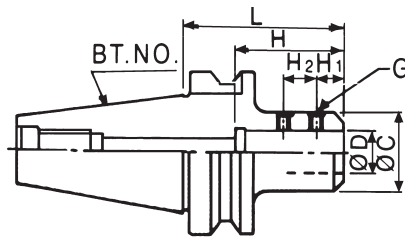
BT 30, 40, 50-SLA



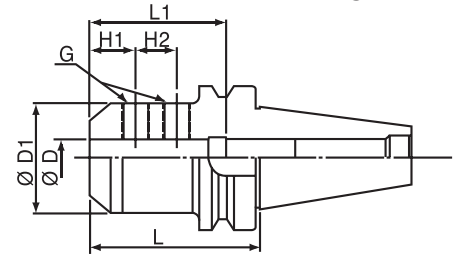
MAS 403



WELDON TYPE



BT-SHANK



Unit:mm

ORDER NO.	SIZE	ØD	ØD1	L	L1	H1	H2	G	WEIGHT (kgs)	CODE NO.
BT-436	BT30-SLA6-60	6	25	60	30	12	10	M6x1.0	0.7	3213-126
BT-437	BT30-SLA8-60	8	28	60	35	14	12	M8x1.25	0.7	3213-127
BT-438	BT30-SLA10-60	10	35	60	40	15	14	M8x1.25	0.7	3213-128
BT-439	BT30-SLA12-60	12	42	60	50	20	16	M12x1.5	0.8	3213-129
BT-440	BT30-SLA16-75	16	48	75	60	20	18	M12x1.5	0.9	3213-130
BT-441	BT30-SLA20-75	20	52	75	70	23	19	M12x1.5	1.2	3213-131
BT-442	BT40-SLA6-75	6	25	75	30	12	10	M6x1.0	1.2	3213-132
BT-443	BT40-SLA8-75	8	28	75	35	14	12	M8x1.25	1.3	3213-133
BT-444	BT40-SLA10-75	10	35	75	40	15	14	M8x1.25	1.4	3213-134
BT-445	BT40-SLA12-75	12	42	75	50	20	16	M12x1.5	1.5	3213-135
BT-446	BT40-SLA14-75	14	44	75	50	20	16	M12x1.5	1.5	3213-136
BT-447	BT40-SLA16-75	16	48	75	60	20	18	M12x1.5	1.6	3213-137
BT-448	BT40-SLA18-75	18	50	75	60	20	18	M12x1.5	1.6	3213-138
BT-449	BT40-SLA20-90	20	52	90	70	23	19	M12x1.5	1.9	3213-139
BT-450	BT40-SLA25-90	25	62	90	80	24	25	M18x1.5	2.2	3213-140
BT-451	BT40-SLA32-90	32	63	90	80	24	28	M20x1.5	2	3213-141
BT-452	BT40-SLA40-105	40	79	105	80	24	28	M20x1.5	3.2	3213-142
BT-453	BT40-SLA42-105	42	79	105	80	24	28	M20x1.5	3.1	3213-143
BT-454	BT50-SLA6-90	6	25	90	30	12	10	M6x1.0	3.9	3213-144
BT-455	BT50-SLA6-150	6	25	150	30	12	10	M6x1.0	4	3213-145
BT-456	BT50-SLA8-90	8	28	90	35	14	12	M8x1.25	3.7	3213-146
BT-457	BT50-SLA8-150	8	28	150	35	14	12	M8x1.25	4.2	3213-147
BT-458	BT50-SLA10-90	10	35	90	40	15	14	M8x1.25	4.2	3213-148
BT-459	BT50-SLA10-150	10	35	150	40	15	14	M8x1.25	4.3	3213-149
BT-460	BT50-SLA12-90	12	42	90	50	20	16	M12x1.5	4.2	3213-150
BT-461	BT50-SLA12-150	12	42	150	50	20	16	M12x1.5	4.9	3213-151
BT-462	BT50-SLA14-90	14	44	90	55	20	16	M12x1.5	4.2	3213-152
BT-463	BT50-SLA16-90	16	48	90	60	20	18	M12x1.5	4.3	3213-153
BT-464	BT50-SLA16-150	16	48	150	60	20	18	M12x1.5	5	3213-154
BT-465	BT50-SLA18-90	18	50	90	60	20	18	M12x1.5	4.3	3213-155
BT-466	BT50-SLA20-105	20	52	105	70	23	19	M12x1.5P	4.5	3213-156
BT-466-1	BT50-SLA20-90	20	50	90	60	20	18	M12x1.5P	4.4	3213-156A
BT-467	BT50-SLA20-150	20	52	150	70	23	19	M12x1.5	4.5	3213-157
BT-468	BT50-SLA20-200	20	52	200	70	23	19	M12x1.5	6.4	3213-158
BT-470	BT50-SLA25-105	25	65	105	80	24	25	M18x1.5	5	3213-160
BT-471	BT50-SLA25-150	25	65	150	80	24	25	M18x1.5P	6.3	3213-161
BT-472	BT50-SLA25-200	25	65	200	80	24	25	M18x1.5P	7.6	3213-162
BT-474	BT50-SLA32-105	32	72	105	80	24	28	M20x1.5	5.3	3213-164
BT-477	BT50-SLA32-250	32	72	250	80	24	28	M20x1.5	9.8	3213-167
BT-478	BT50-SLA40-120	40	90	120	90	30	32	M20x1.5	6.5	3213-168
BT-479	BT50-SLA42-120	42	90	120	90	30	32	M20x1.5	6.7	3213-169

MILL HOLDER